

# Floor Grinding Trolley

**WARNING: Ensure all fasteners are tight before operating**

**WARNING: Always keep feet and hands away from rotating parts**

## List of Parts

- Floor Grinding Trolley
- Velcro Strap
- Handle Column
- Wrench

## Assembly

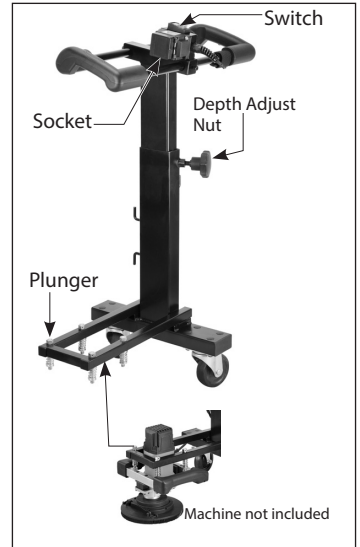
Insert the handle column into main body of the unit. Adjust the column to the desired height and tighten the depth adjust nut.

## Mounting the Grinder Motor

If the grinder is equipped with a lock off switch, press the lock button and switch, then use the velcro strap to keep it locked on.

If the grinder is equipped with a lock on switch, then simply lock the switch in the on position.

Thread the 4 plungers into the threaded tabs provided in the handle of the grinder and tighten with the wrench. Plug the grinder's power supply cord into the socket on the trolley. Coil up the excess length of cable and hang on the hanger of the trolley. Connect the vacuum hose to the grinder and hang the hose on the hanger



## Spacers

If using diamond cup wheels with lower than standard offsets, it may be necessary to use spacers between the cup wheel and the inner flange as needed to compensate for the overly low grinding height. Arbor spacers in thicknesses 2mm, 3mm, and 4mm are provided with the trolley for this purpose.

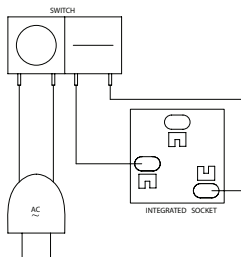
## Operation

Once mounted, the switch on the trolley acts as the switch for the grinder. Press the trolley's switch to turn on. Holding the trolley handles, provide enough down force to keep the grinder flat with the surface. The spring plungers will allow the grinder to follow the work surface. Keep stable footing and keep feet away from the grinding head at all times.

## Caution:

**Do not attempt edge grinding with the machine mounted to the floor grinding trolley. The extra leverage of the trolley will easily damage the machine's dust skirt when it inevitably contacts the wall. In addition, the range of motion allowed by the floor grinding trolley is not suitable for edge grinding. Always perform edge grinding in hand-held mode only. Only use the floor grinding trolley for open areas.**

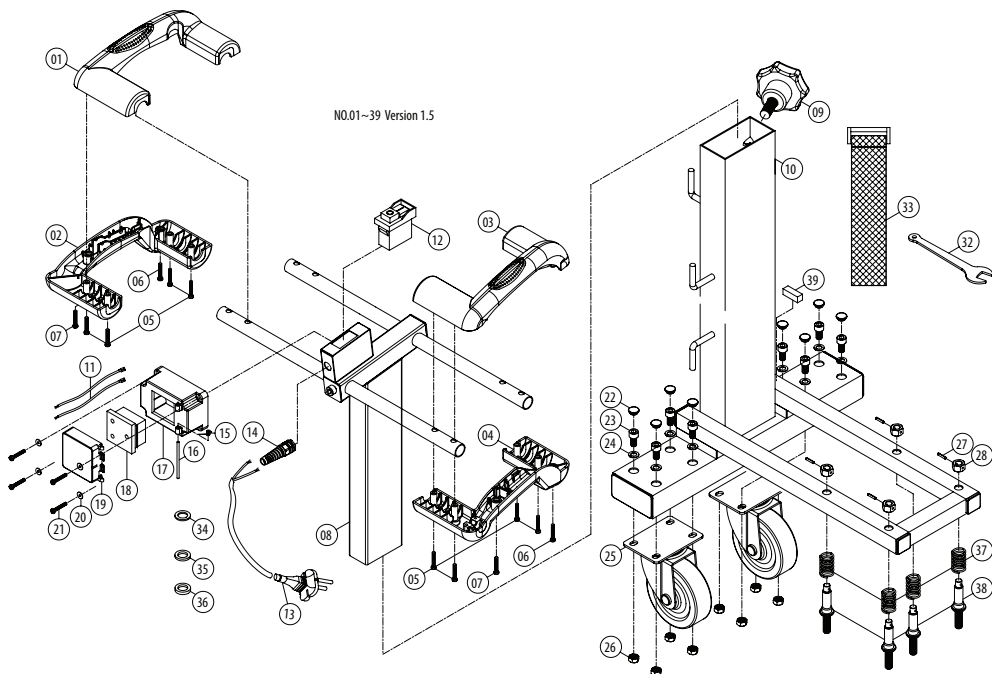
## Wiring



## Original instructions

For your personal safety, READ and UNDERSTAND before using. SAVE THESE INSTRUCTIONS FOR FUTURE REFERENCE.

# EXPLODED VIEW



## PARTS LIST

NO.	Parts Name	Q'TY	NO.	Parts Name	Q'TY
1	HANDLE GRIP-LEFT REAR	1	19	HINGED COVER	1
2	HANDLE GRIP-LEFT FRONT	1	20	FLAT WASHER (Ø4xØ6x0.5)	4
3	HANDLE GRIP-RIGHT REAR	1	21	PANHEAD MACHINE SCREW (M3x20xP0.5)	4
4	HANDLE GRIP-RIGHT FRONT	1	22	CAP	8
5	PANHEAD TAPPING SCREW (M4x45)	8	23	SOCKET CAP SCREW (M8x16xP1.25)	8
6	PANHEAD TAPPING SCREW (M4x30)	2	24	SPRING WASHER (M8)	8
7	PANHEAD TAPPING SCREW (M4x12)	2	25	CASTER	2
8	HANDLE COLUMN	1	26	HEX NUT (M8)	8
9	DEPTH ADJUST NUT (M14xP2.0)	1	27	ROLL PIN (Ø3x14)	4
10	FRAME SET	1	28	HEX SLEEVE	4
11	WIRE LEAD (1015-14#12CM)	2	32	COMBINATION WRENCH (M16)	1
12	MOTOR SWITCH (110V/220V)	1	33	TIE STRAP	1
13	POWER SUPPLY CABLE	1	34	SPACER (2mm)	1
14	CABLE GLAND	1	35	SPACER (3mm)	1
15	TORSION SPRING (Ø0.7xØ2.5 xØ3.9x21L)	1	36	SPACER (4mm)	1
16	HINGE PIN	1	37	SPRING (Ø1.5xØ15xØ18x6Tx25L)	4
17	COVER	1	38	PLUNGER	4
18	INTEGRATED SWITCHING SOCKET (110V&220V)	1	39	SPIRIT LEVEL (10x10x29)	1